

## CANINE PANCREATITIS

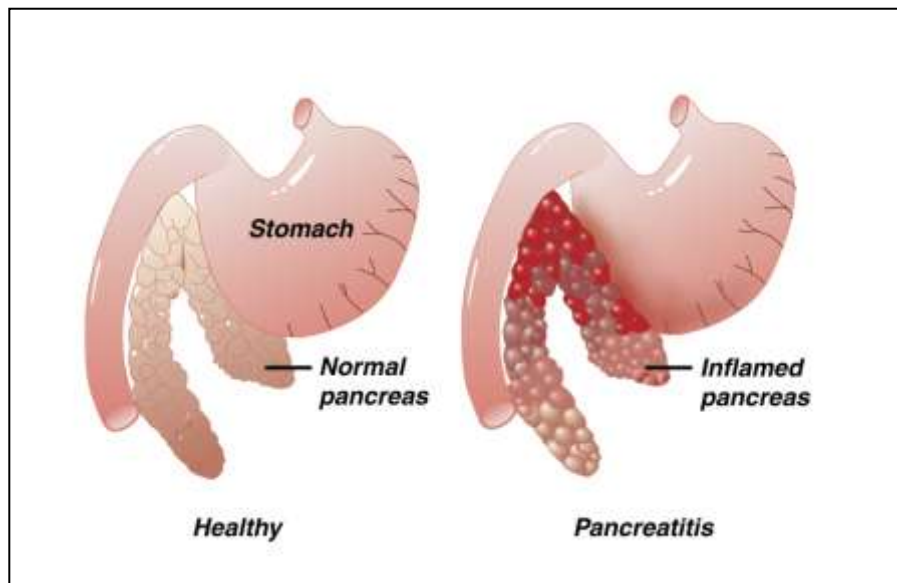
### *What is pancreatitis?*

The pancreas is a vital organ, which lies on the right side of the abdomen. It has two functions:

- 1) To Produce Digestive Enzymes
- 2) To Produce Hormones Such As Insulin

When the pancreas becomes inflamed, the disorder is called *pancreatitis*. It is a disease process that is seen commonly in the dog. There is no age, sex, or breed predisposition.

There are two main forms of acute or sudden onset pancreatitis: 1) the mild, edematous form and 2) the more severe, hemorrhagic form. A few dogs that recover from an acute episode of pancreatitis may continue to have recurrent bouts of the acute disease, known as chronic, relapsing pancreatitis. The associated inflammation allows digestive enzymes to spill into the abdominal cavity resulting in secondary damage to the liver, bile ducts, gall bladder, and intestines.



### *What causes it?*

The cause of pancreatitis is not known; however, there may be several contributory factors. It is often associated with eating a rich, fatty meal. In some cases, it may be associated with the administration of corticosteroids; however, some dogs with pancreatitis do not have exposure to either.

Under normal conditions, digestive enzymes produced by the pancreas are activated when they reach the small intestines. In pancreatitis, these enzymes are activated prematurely in the pancreas instead of in the

small intestines. This results in digestion of the pancreas itself. The clinical signs of pancreatitis are often variable, and the intensity of the disease will depend on the quantity of enzymes that are prematurely activated.

### ***What are the clinical signs?***

The diagnosis of pancreatitis is based on three criteria: clinical signs, laboratory tests, and radiographs (x-rays) and/or ultrasound examination. The disease is typically manifested by nausea, vomiting, fever, abdominal pain, and diarrhea. If the attack is severe, acute shock, depression, and death may occur.

Laboratory tests usually reveal an elevated white blood cell count; however, an elevated white blood cell count may also be caused by many other things besides pancreatitis. The elevation of pancreatic enzymes in the blood is probably the most helpful criteria in detecting pancreatic disease, but some dogs with pancreatitis will have normal enzyme levels. Radiographs and ultrasound studies may show an area of inflammation in the location of the pancreas. Unfortunately, many dogs with pancreatitis will elude detection with any of these tests. Consequently, the diagnosis of pancreatitis may be tentative in some cases.

### ***How is pancreatitis treated?***

The successful management of pancreatitis will depend on early diagnosis and prompt medical therapy. The mild form of the disease is best treated by resting the pancreas from its role in digestion. The only way to "turn off" the pancreas is to withhold all oral fluids and food. This approach is accompanied by intravenous fluids to maintain normal fluid and electrolyte balance. The presence of shock necessitates the immediate and intense use of intravenous fluids and shock medications. Analgesics are often administered due to the intense pain pancreatitis often causes.

### ***Will my dog recover?***

The prognosis depends on the extent of the disease when presented and a favorable response to initial therapy. Dogs that present with shock and depression have a very guarded prognosis. Most of the mild forms of pancreatitis have a good prognosis. There are three possible long-term complications that may follow severe or repeated pancreatitis. If a significant number of cells that produce digestive enzymes are destroyed, a lack of proper food digestion may follow. This is known as exocrine pancreatic insufficiency (EPI) and can be treated with daily administration of enzyme replacement. If a significant number of cells that produce insulin are destroyed, diabetes mellitus can result. In rare cases, adhesions between the abdominal organs may occur as a consequence of pancreatitis. However, most dogs recover with no long-term effects.

### ***Pancreatitis Home Care notes – Once your dog has been discharged from hospital it is important to***

- 1) Adhere to a strict low fat diet for the rest of their life – this can be a special diet (e.g. hills I/d diet, Royal Canin digestive low fat) or a homemade diet. If your pet is over weight, it is essential to get them onto a weight loss program to try and prevent recurrence.
- 2) For the first 3-5 days give small frequent feeds to allow the pancreas and gastrointestinal tract time to recover, after this time you can revert to once/ twice daily feeding. If vomiting or in-appetence recurs please contact us as soon as possible.
- 3) Please use the entire course of any medication prescribed.

